

ONISCUS ENTOMON.



CHARACTER GENERICUS.

Antennæ setaceæ.

Palpi inæquales, posteriores longiores.

Corpus ovale.

Pedes quatuordecim.

CHARACTER SPECIFICUS, &c.

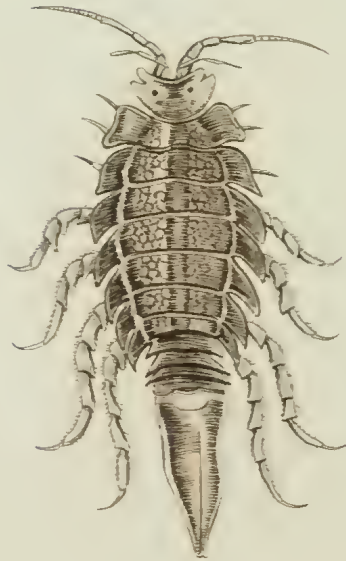
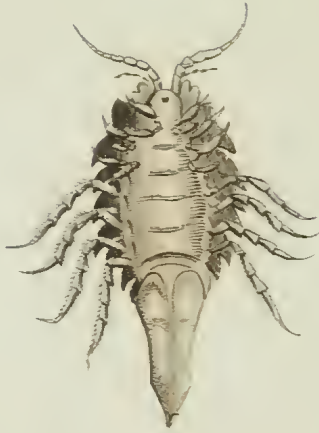
ONISCUS antennis quaternis, cauda oblonga
acuta.

Fabr. spec. ins. 1. p. 375.

ONISCUS ENTOMON. O. abdomine subtus
nudo, cauda subulata.

Lin. Syst. Nat. p. 1060.

Marina hæc species, Oniscorum Britannicorum
maxima, adhæret plerumque piscibus majoribus.
Color viventi livido-fuscens, exsiccatae obscuro-al-
bidus.



THE
SHARP-TAILED ONISCUS.



GENERIC CHARACTER.

Antennæ setaceous.

Feelers unequal, the hinder longest.

Body oval.

Legs fourteen.

SPECIFIC CHARACTER, &c.

Pale brown ONISCUS, with four antennæ, and oblong, sharpened tail.

SQUILLE ENTOMON.

Degeer. 7. p. 514.

This insect, the largest of the British Onisci, is a marine species, and is commonly found attached to the bodies of the larger fishes: its colour, when living, is pale brown, which fades in the dried animal into dull white.